

An aerial photograph of a large green field, likely a grass or hay field, with a blue tractor in the center. The field is divided into rows of harvested crops, creating a pattern of green and brown. The tractor is positioned in the lower-middle part of the frame, moving through the field. The overall scene is bright and clear, suggesting a sunny day.

**CSR
RISK
CHECK**

CSR RISK CHECK

IN THE CONTEXT OF EUROPEAN HREDD REGULATION

29th of May, 2024

AGENDA

14:00 – 14:10

Introduction & speakers

14:10 – 14:25

CSR Risk Check live demo & new features

14.25 – 14:40

Using the CSR Risk Check in risk analysis

14:40 – 15:00

European cooperation

- Insights from **Germany**
- Insights from **Switzerland**

15:00 – 15:30

Q&A

INTRODUCTION & SPEAKERS



Marit Berkelaar
Programme Manager
MVO Nederland



Jannik Struss
Project Manager
UPJ



Jenny Ohme
Coordinator at
German Helpdesk
on Business and
Human Rights



Nadja Meier
Senior Advisor on CSR at
State Secretariat for
Economic Affairs
Switzerland

EUROPEAN COOPERATION

The CSR Risk Check is funded by:

- The **Dutch** Ministry of Foreign Affairs and Development Cooperation;
- The **German** Ministry for Economic Cooperation and Development;
- And the **Swiss** State Secretariat for Economic Affairs.

MVO Nederland is the legal owner of the CSR Risk Check. For the German version, we work together with independent non-profit organization **UPJ**.



MVO NEDERLAND (CSR THE NETHERLANDS)



WHO WE ARE

The partner network innovates and implements



Enterprising people and businesses make the difference



The movement for 'new economy' entrepreneurs



A future-proof economy (climate-neutral, inclusive, circular and built around fair supply chains)

WHAT ARE WE DOING TO ACHIEVE OUR GOAL?

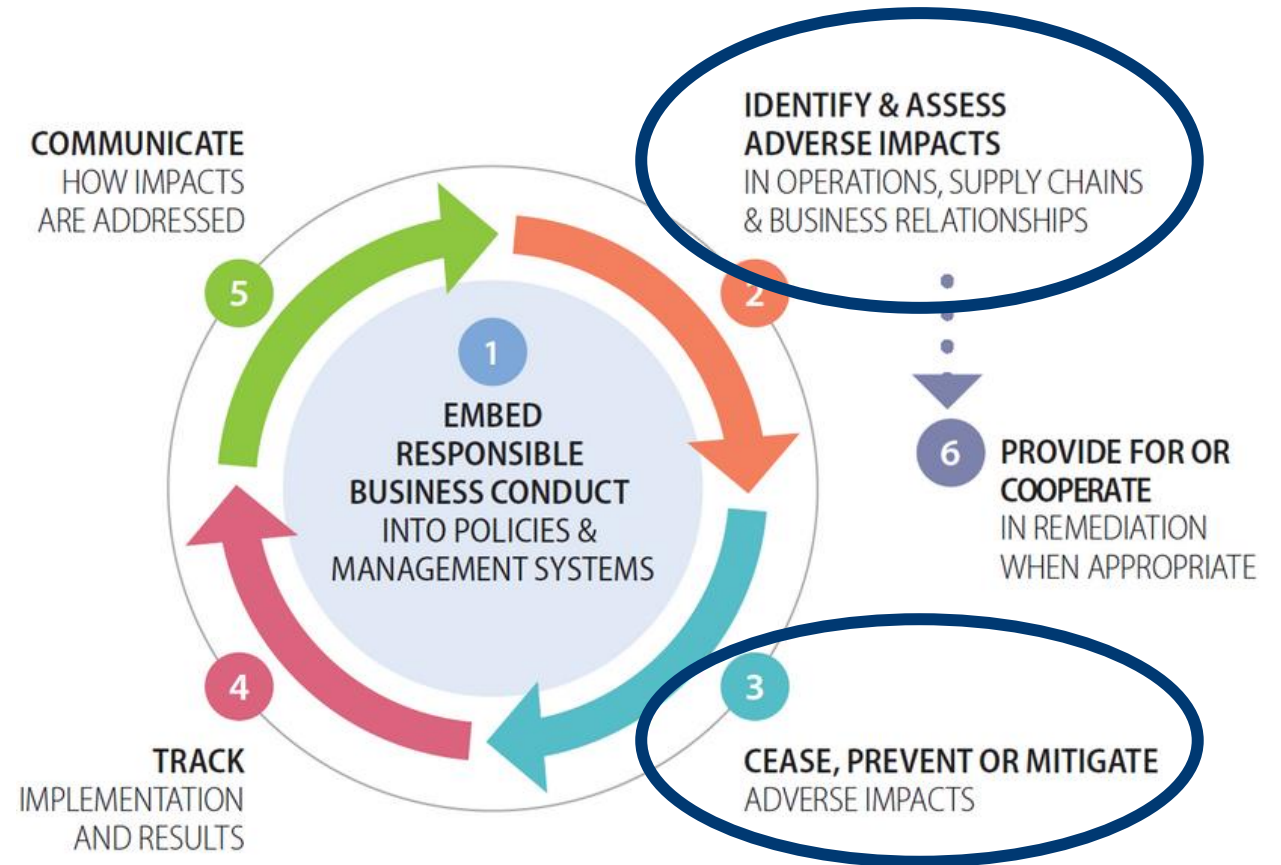
1. We drive innovations through projects that revolve around unexpected partnerships (*matchmaking, innovation projects and networks*).
2. We create the right environment to accomplish the acceleration needed on the path towards the new economy (*lobbying governments and financiers*).

CSR RISK CHECK

An aerial photograph of a shipping yard filled with rows of colorful intermodal containers. The containers are stacked in neat rows, creating a grid-like pattern. The colors include red, blue, yellow, white, and green. The ground is paved, and there are some yellow markings on the left side. The overall scene is brightly lit, suggesting a sunny day.

CSR RISK CHECK & DUE DILIGENCE

- Companies are increasingly expected to identify, prevent and mitigate CSR risks in their supply chains → due diligence
- The CSR Risk Check aims to support companies in their **due diligence process**, focus on step 2 and 3
- The tool helps companies to comply with (emerging) legislation such as the **CSRD**, **CSDDD** and **EUDR**
- Stimulate companies to create less negative and more positive **impact** in their supply chains



BACKGROUND CSR RISK CHECK

- Created 10 years ago, MVO Nederland is the legal owner
- Financed by [Dutch](#), [German](#) and [Swiss](#) governments
- Content available in Dutch, German and English
- Working together with [UPJ](#) for the German version of the tool
- Open for new partnerships & languages
- Tool is free, anonymous and easy to use
- Target group: SMEs, but larger companies use the tool as well
- Based on OECD GLs & UNGPs

CSR RISK CHECK

The CSR Risk Check tool is aimed at companies that are importing from or have production facilities in foreign countries. Start this (short) check and find out which international CSR risks your business activities are exposed to and what you can do to manage them.

[START THE CHECK](#)



[LEARN MORE ON HOW TO GET STARTED](#)

www.csrriskcheck.com

CONTENT CSR RISK CHECK

- Knowledge from over **3,500** open online sources
- Over **6,000** risks and advice related to products and/or countries (qualitative data)
- Covering **400** products (SITC product classification)
- Covering all **250** countries
- Index of **22** CSR themes in 4 categories: Fair Business Practices, Labour Rights, Human Rights & Ethics, Environment

22 CSR THEMES

FAIR BUSINESS PRACTICES

- Taxation
- Corruption
- Market distortion & competition

HUMAN RIGHTS & ETHICS

- Government influence
- Conflict & security
- Land use & property rights
- Community impact
- Animal welfare
- Consumer interests & product safety

LABOUR RIGHTS

- Freedom of association
- Labour conditions
- Forced labour & human trafficking
- Child labour
- Discrimination & gender
- Wage & remuneration
- Health & safety at work

ENVIRONMENT

- Climate & energy
- Biodiversity & deforestation
- Water use & water availability
- Air pollution
- Soil and (ground-)water contamination
- Environment & waste

CSR RISK CHECK DEVELOPMENT

RELAUNCH DEC 2023

- Option to select multiple products and countries
- Interactive filter menu
- Catering to different audiences
- Improved visibility additional tools

ONGOING DEVELOPMENT

- Big news: It is possible again to download the PDF report!
- We continue the development of the website based on user feedback

LIVE DEMO CSR RISK CHECK

CSR RISK CHECK

The CSR Risk Check tool is aimed at companies that are importing from or have production facilities in foreign countries.

Start this (short) check and find out which international CSR risks your business activities are exposed to and what you can do to manage them.

[START THE CHECK](#)



[LEARN MORE ON HOW TO GET STARTED](#)

EXTRA MODULES

1.

FILL OUT THE CSR RISK CHECK

Start this (short) check and find out which international CSR risks your business activities are exposed to and what you can do to manage them

START THE CSR RISK CHECK

2.

DEFINE YOUR PRIORITIES

The Priority Check compares different supply chains, with the goal of indicating which supply chain (or which part of your chain) is the best place to start to address CSR risks.

START THE QUICK CHECK PRIORITIES

3.

WORK ON DUE DILIGENCE

Download our roadmap and learn how to approach due diligence step by step. The goal: adjust your internal policies and procedures to ensure that you do business with respect for people and the environment.

DOWNLOAD THE ROADMAP

4.

CHECK PROGRESS WITH THE CHECKLIST

Use this interactive checklist to further increase your influence in your supply chain. The checklist will help you learn how to take targeted action to influence the CSR performance of your suppliers.

START THE CHECKLIST

BOUNDARIES & CONDITIONS

RISKS RELATED TO SPECIFIC PRODUCT AND/OR COUNTRY

- Only risks related to specific product (specific step in the supply chain) are shown, not risks of all possible components of products
- Most risks are qualitative, unless the data source gives a score
- No naming and shaming of companies; risks are for products/sectors in general

OWNERSHIP & INDEPENDENCE

- Tool is owned by MVO Nederland
- Descriptions of risks or advices are not the opinion of MVO NL, nor government, nor other project partners. [All risks and advice are based on online public, credible sources.](#)

A light beige world map is centered in the background of the slide. The map shows the outlines of all major continents: North America, South America, Europe, Africa, Asia, and Australia. The map is rendered in a simple, flat style with no shading or topographical details.

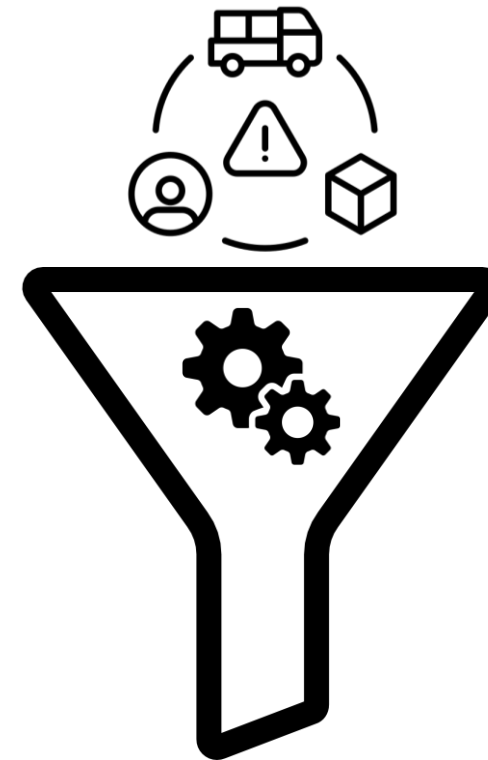
**CSR
RISK
CHECK**

CSR RISK CHECK & RISK ANALYSIS

RISK ANALYSIS THE ROLE OF THE CSR RISK CHECK

1. ABSTRACT RISK ANALYSIS

- Overview of potential risks in supply chain
- Research of country and product-related risks
- **CSR Risk Check** as a free and reliable source of information



2. CONCRETE RISK ANALYSIS

- Identification of actual adverse impacts in your supply chain
- Internal sources of information
- Prioritization of risks



RISK ANALYSIS THE ROLE OF THE CSR RISK CHECK



Car battery

Nickel	Indonesia	Deforestation	<i>Nickel mines have cleared at least 76,000 hectares of forest</i>	Environment & local communities	Clean Energy Frontier
Cobalt	DR Congo	Child labour	<i>Children in the DR Congo are subjected to child labour in cobalt mining</i>	Children	U.S. Department of Labor

Transport & Logistics

Road transport	Europe	Wage	<i>European truck drivers are often paid poor wages and in some cases, wages are withheld</i>	Truck drivers	International Transport Workers' Federation
----------------	--------	------	---	---------------	---

RISK ANALYSIS THE ROLE OF THE CSR RISK CHECK



- Nickel
- Indonesia



Supplier 1

- Cobalt
- DR Congo



Supplier 2

- Road Transport
- Europe



Supplier 3

Identification of actual adverse impacts in own supply chain through:

- Internal knowledge (audit documents and supplier assessments)
- Supplier information
- Questioning of employees
- Consultation with NGOs and trade unions

➤ *Next step: Prioritization of risks*

**CSR
RISK
CHECK**

EUROPEAN COOPERATION



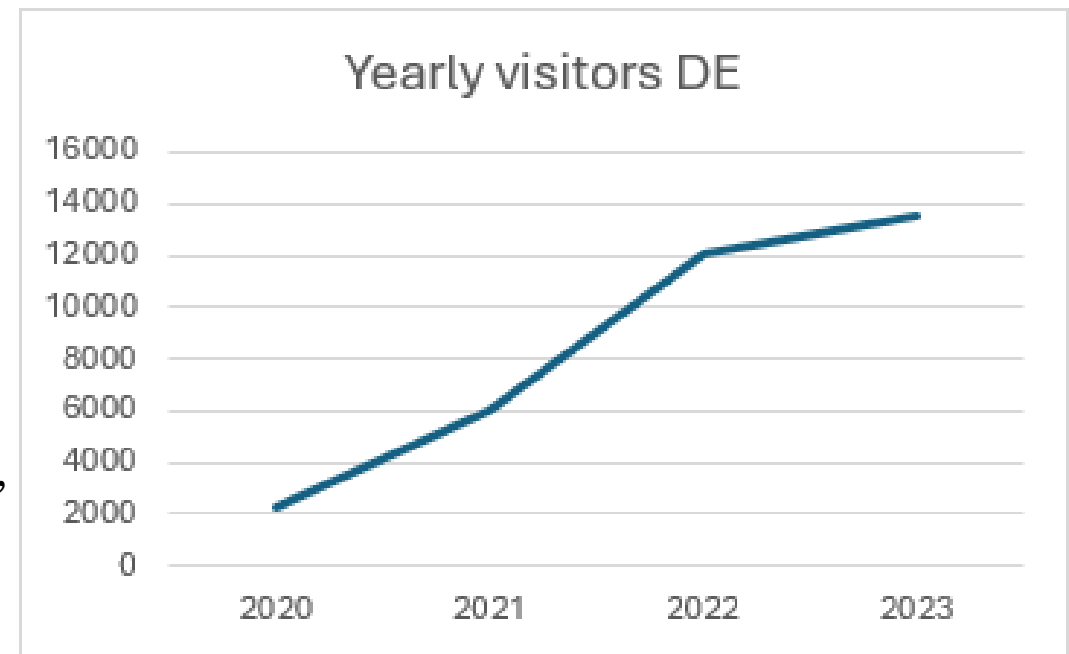
INSIGHTS FROM GERMANY

THE CSR RISK CHECK IN THE CONTEXT OF THE GERMAN SUPPLY CHAIN ACT

Cooperation between Helpdesk on BHR, MVO and UPJ since 2018 for German version (financed by BMZ)

German companies' use of the tool in the context of the Supply Chain Act

- → Often very systematic integration of the CSR RC in risk analysis but approaches differ: some companies rely on tool as primary source; others use indices/other data and use tool for validation
- → **Most searched countries:** Germany, China, India, Austria, Turkey, USA, Italy
- → **Most searched products:** Agricultural products (eg. Vegetable Oils, Coffee/Tea/Cocoa), Clothing/Apparel/Textiles, Transport/Storage, Iron/Steel, Electrical Machinery, IT services, Facility Management, Tubes/Pipes/Plastic



INSIGHTS FROM GERMANY

THE CSR RISK CHECK IN THE CONTEXT OF THE CSDDD

CSR RC categories relevant for the CSDDD (examples, non-exhaustive)

Climate & energy	Freedom of association & assembly
Biodiversity & deforestation	Working conditions (contracts, working hours)
Water consumption & water availability	Forced labour & human trafficking
Air pollution	Child labour
Soil & (ground) water pollution	Discrimination
Environment & waste	Wages & remuneration
Impact on the local community	Health & safety at work
Conflict and security	

→ Risk analysis tool of the [SME compass](https://kompas.wirtschaft-entwicklung.de/fileadmin/user_upload/Praxishilfen/TK_02_Risk_analysis_tool_01.xlsx) (based on UNGPs and OECD Guidelines) as complimentary resource to help map potential risks: https://kompas.wirtschaft-entwicklung.de/fileadmin/user_upload/Praxishilfen/TK_02_Risk_analysis_tool_01.xlsx

INSIGHTS FROM SWITZERLAND

IMPACTS FROM EU REGULATIONS ON SWITZERLAND

1. **Corporate Sustainability Reporting Directive:** Public consultation on a Swiss draft legislation aligned with the CSRD (in summer 2024)
2. **Corporate Sustainability Due Diligence Directive:** Update of the external study on the impacts of the CSDDD on Swiss companies (based on the final text of the CSDDD). Following this analysis and under observation as to how the EU member states implement the directive, the Swiss Federal Council will decide on how to proceed.

CURRENT REGULATIONS IN SWITZERLAND

1. **Obligation to report on non-financial issues** (for large public companies and financial institutions)
2. **Obligation to carry out DD regarding minerals from conflict areas** (incl. gold) and **child labor**

INSIGHTS FROM SWITZERLAND

CSR RISK CHECK HELPS TO IMPLEMENT RESPONSIBLE BUSINESS CONDUCT

- **OECD Guidelines for Multinational Enterprises on Responsible Business Conduct:** National Contact Point for RBC promotes the Guidelines and OECD Due Diligence Guidances (incl. specifically for the minerals, agricultural, textile and finance sector)
 - **UN Guiding Principles for Business and Human Rights:** Revised National Action Plan to be adopted
 - **Further measures to support SMEs:** Ongoing assessment of options to support Swiss SMEs to implement the new EU and international RBC guidelines
- **CSR Risk Check as a cost-free + product and country specific tool is useful particularly for SMEs to help implement regulation and international RBC standards**

Q&A

QUESTIONS OR FEEDBACK?

csrriskcheck@mvonederland.nl

WEBSITE

www.csrriskcheck.com

CLOSING REMARKS

QUESTIONS OR FEEDBACK?

csrriskcheck@mvonderland.nl

WEBSITE

www.csrriskcheck.com